

TAX MAP H14

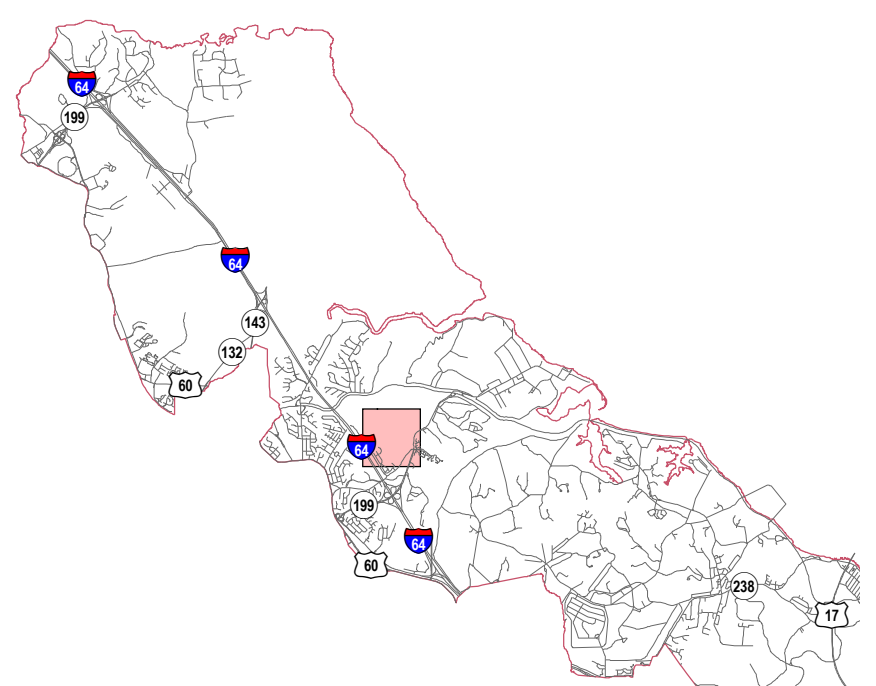
August 12, 2019

THIS IS NOT A LEGAL PLAT.
This map should be used for
information purposes. It is not
suitable for detailed planning.

Prepared by York County GIS
Department of Information Technology

KEY TO ADJACENT SHEETS

| | | |
|-----|---------------|-----|
| G15 | H15 | I15 |
| G14 | a b 14 c d | I14 |
| G13 | H13 | I13 |

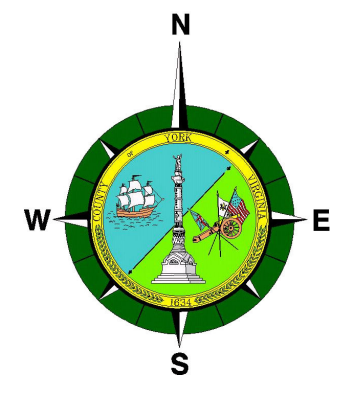


TEXT LEGEND

- 201 Street Address
- 1 or A Lot Number
- 25(4) or 25- Map Number
- G14c-1234-4567 GPIN
- YORK RIVER Water Feature

LINE LEGEND

- Property Lines
- Rights of Way
- Section Boundary
- Subdivision Boundary
- County Boundary
- Easements



H14