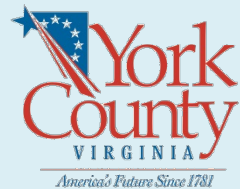


Transportation Safety Community Forum

Thursday, October 26, 2017

6:30 PM

York Hall



Transportation Safety Commission

Purpose

To assist the Board of Supervisors in the development of transportation safety programs and activities on the local level and make recommendations on improvements for highway and transportation safety

Transportation Safety Commission

- *9 citizens appointed by the Board of Supervisors*
- *Ex officio County representatives*
 - *Board of Supervisors Fire & Life Safety, Planning, Schools, Sheriff's Office, Youth Commission*
- *Non-voting ex officio representatives*
 - *National Park Service, VDOT, Virginia Highway Safety Office*

Transportation Safety Commission

Citizen Appointees

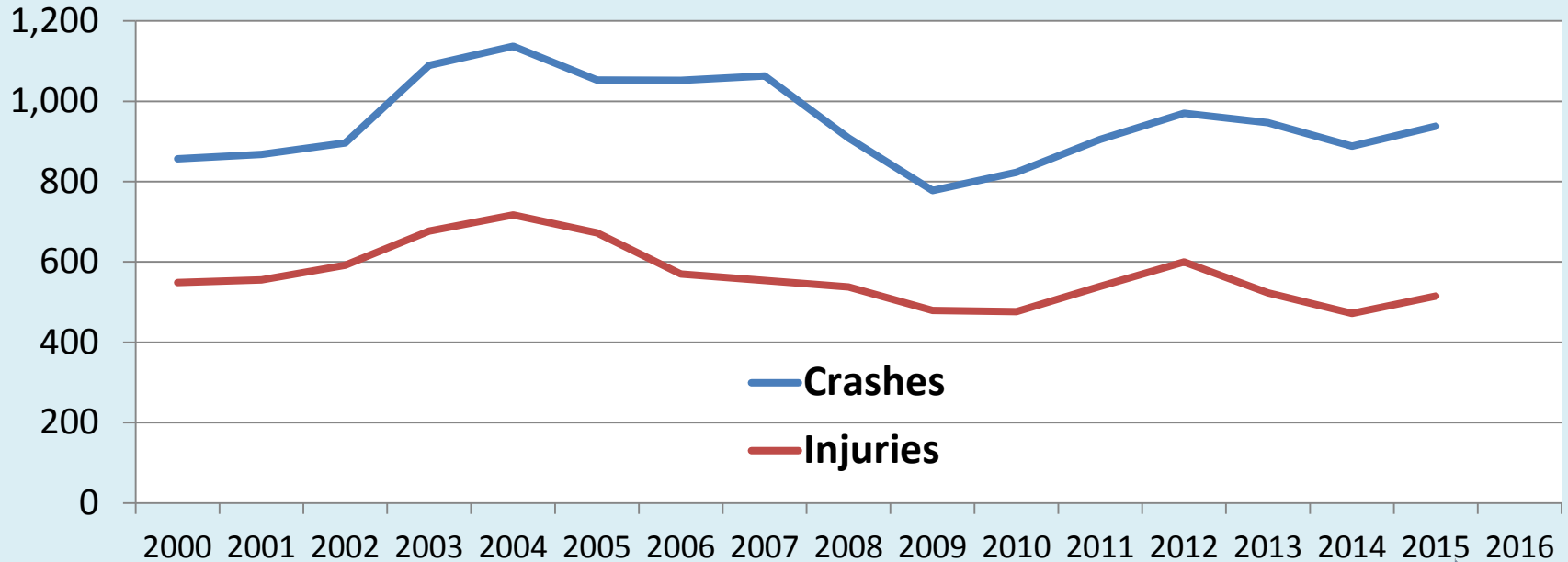
- Tom Slaughter, Chairman, 5
- David Westcott, Vice Chair, 3
- Eddie Abisaab, 4
- William Andersen, 1
- Lisa Church, 5
- Ron Fowler, 2
- Spindler Krause, 3
- Marcella Murphy, 4
- Michael Smith, 1

Transportation Safety Commission

Ex Officio Members

- Tim Cross, YC Planning
- Angela Biney, VDOT-Suffolk
- Danny Diggs, Sheriff
- Chad Green, BOS Liaison
- Carl James, YC Schools
- Dwight Jenkins, VHSA
- Steve Kopczynski, Fire Chief
- James Lash, YC Schools
- Evan Swartzbaugh, YCYC
- Steven Williams, NPS

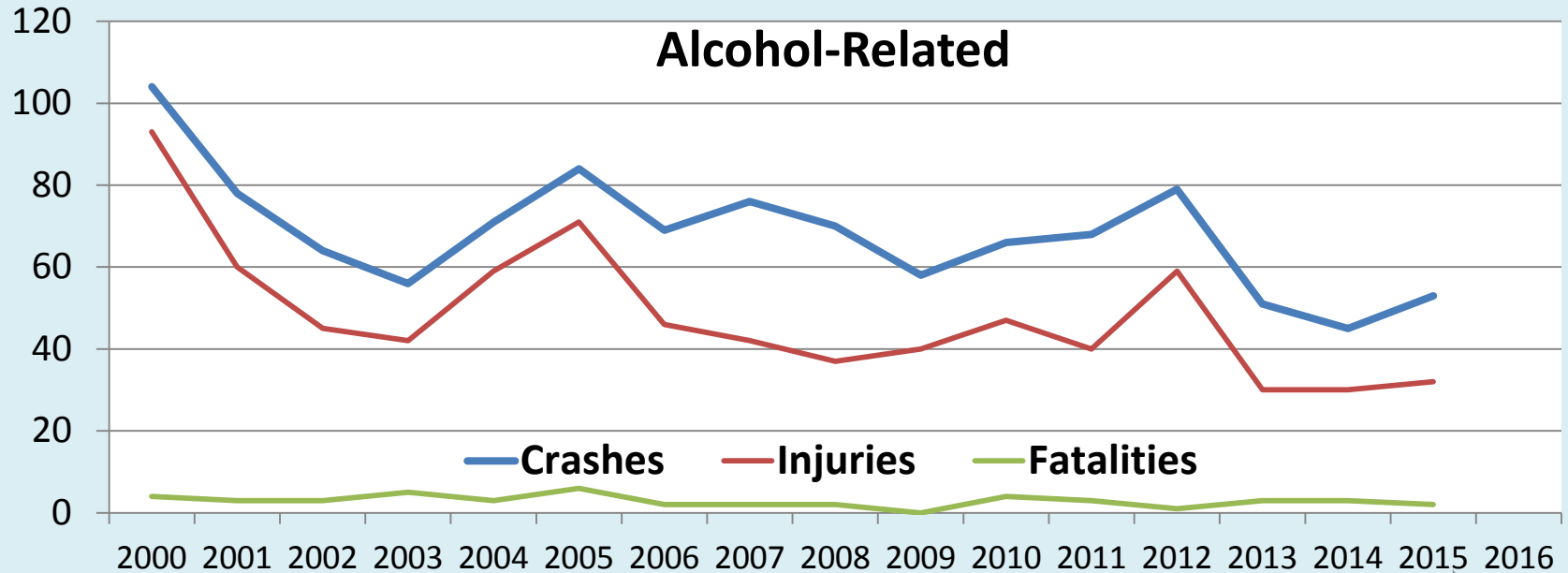
York County Crash Trends



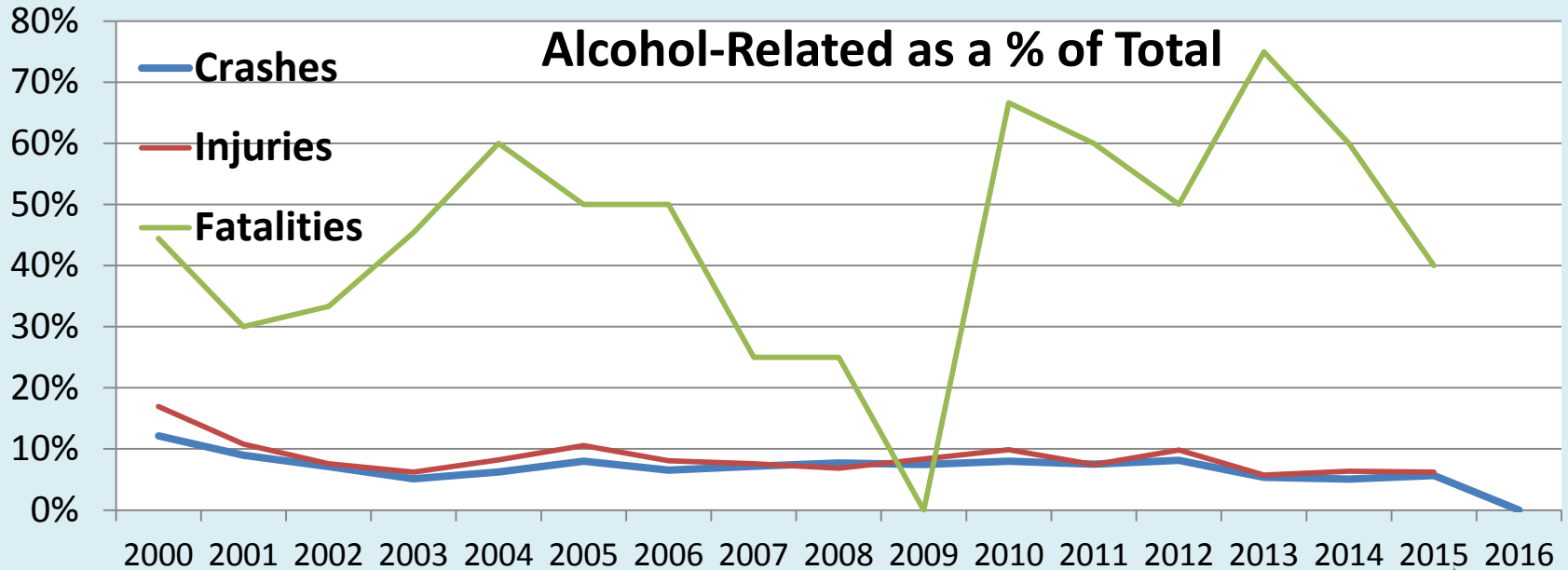
York County Crash Trends



York County Crash Trends



York County Crash Trends



Public Comments

Preliminary Survey Responses

Dangerous Intersections – Drivers

- *Route 17/Victory Boulevard*
- *Victory Boulevard/Hampton Highway*
- *Route 17/Route 173*
- *Victory Boulevard/Big Bethel Road*
- *Victory Boulevard/Kiln Creek Parkway*

Dangerous Locations – Cyclists

- *Everywhere*
- *Route 17*
- *Cook Road*
- *Hampton Highway*
- *Victory Boulevard*
- *Big Bethel Road*

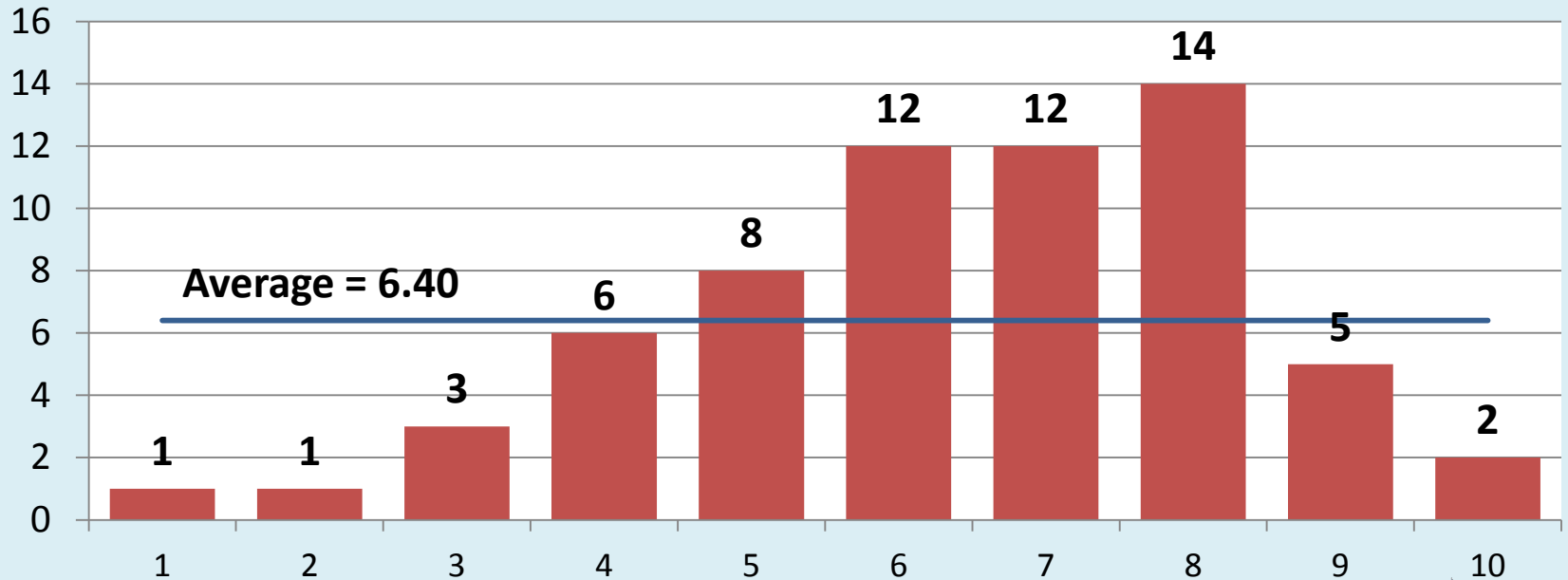
Dangerous Locations –Walkers

- *Victory Boulevard*
- *Route 17*
- *Hampton Highway*
- *Big Bethel Road*
- *Dare Road*
- *Penniman Road*

Boating Safety Concerns

- *Boating under the influence*
- *Jet skis*
- *Wake surfing*
- *Poorly marked oyster grounds/crab pots*

On a scale of 1 (Poor) to 10 (Excellent), how well do you feel VDOT keeps the roadways in the County safe?



Thank
you!