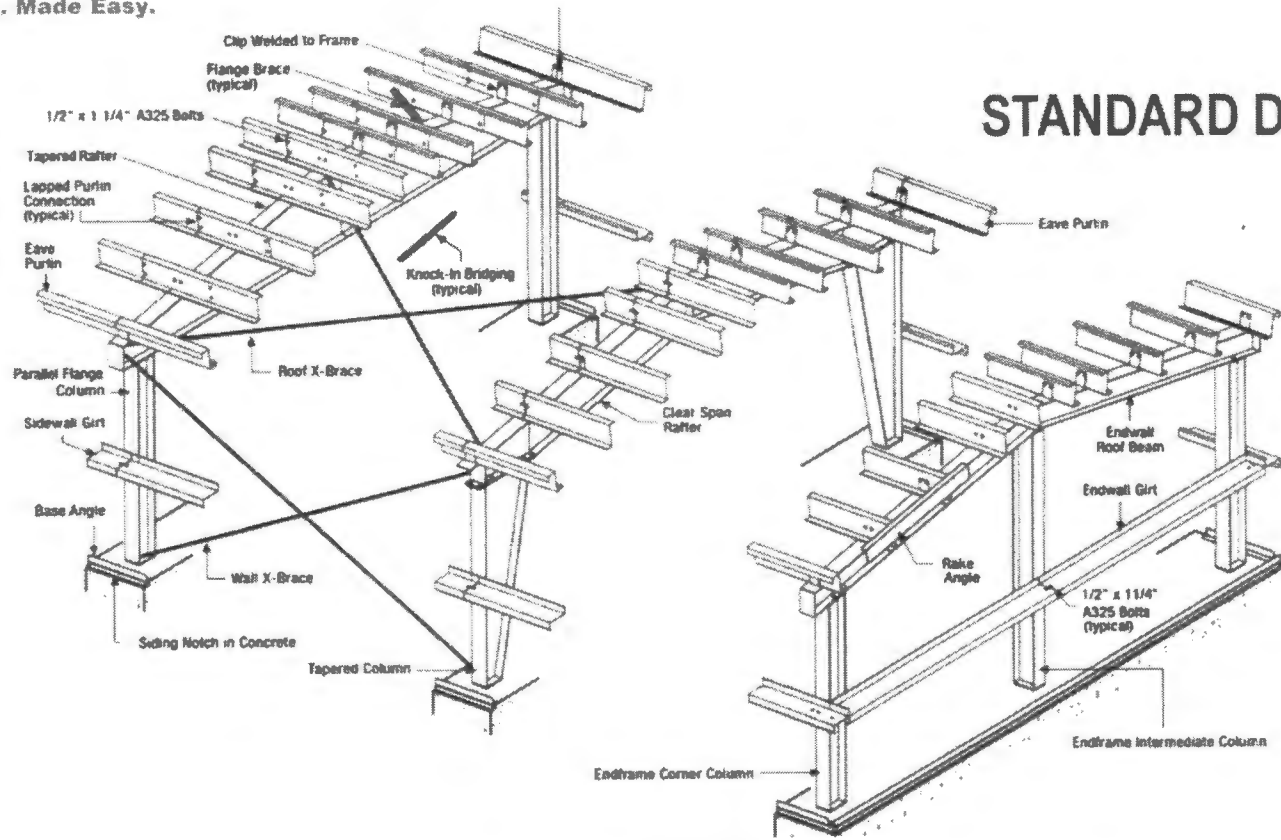




Metal Buildings. Made Easy.

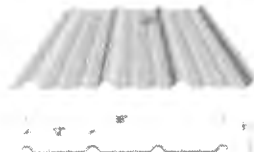


STANDARD DETAILS

PBR (PBR)

The PBR metal wall panel has deep ribs and a smooth finish. It is available in a variety of gauges and facings. The panel can be used for both roof and wall applications.

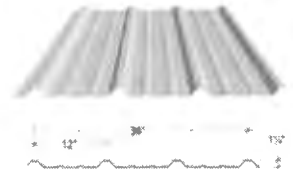
- Panel Attachment: Exposed Fastening System
- Gauges: 20, 24
- Facings: Smooth (standard), Embossed (optional)
- Coatings: Galvalume Plus[®] Signature[®], 200 Signature[®]



PBR (PBR)

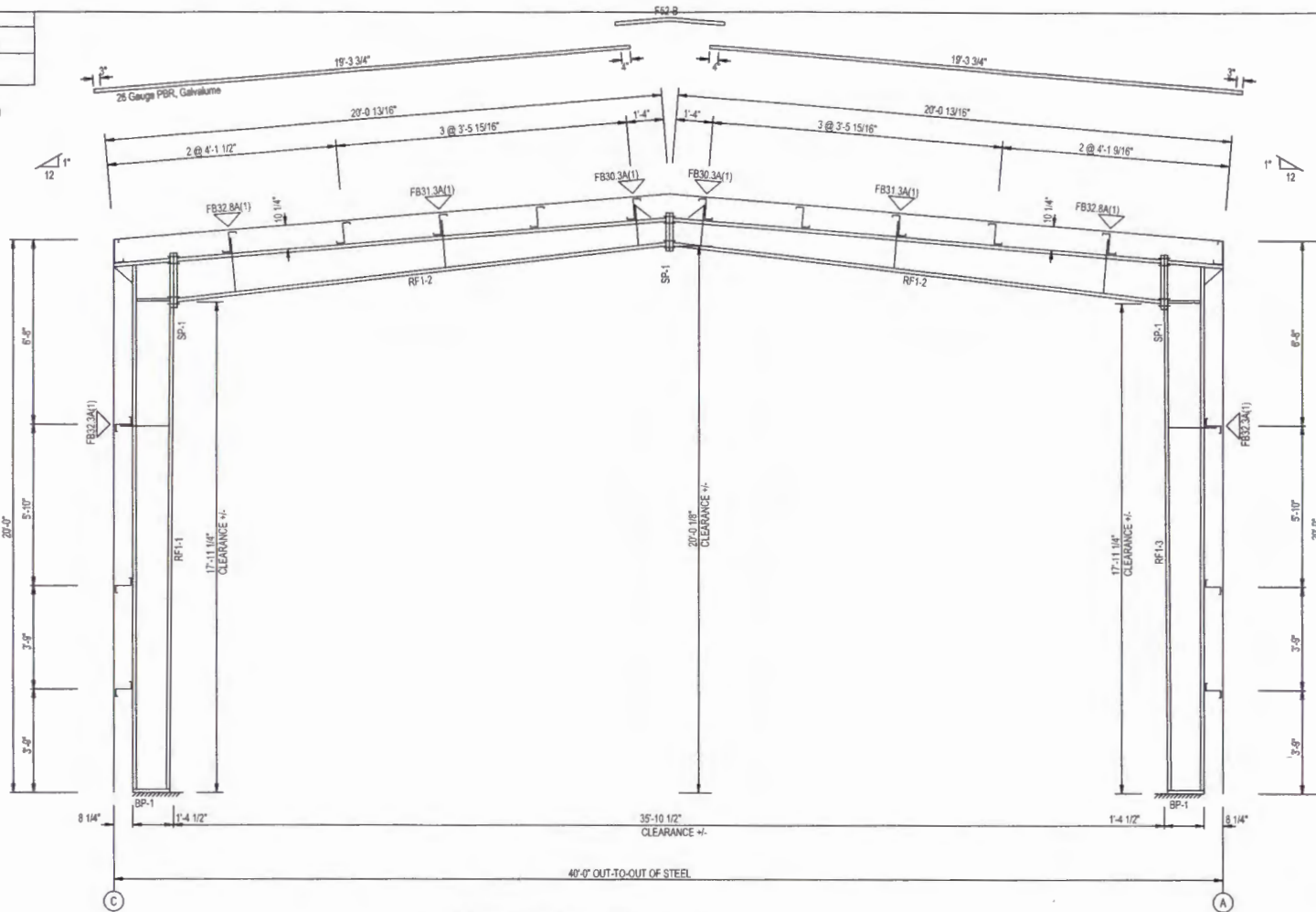
The PBR metal roof panel has a wind uplift rating and qualifies for UL 90 in multiple construction numbers. Frequently used for roof and wall systems, it has symmetrical, deep ribs and exposed fasteners.

- Panel Attachment: Exposed Fastening System
- Gauges: 26, 24
- Facings: Smooth (standard), Embossed (optional)
- Coatings: Galvalume Plus[®] Signature[®], 200 Signature[®]



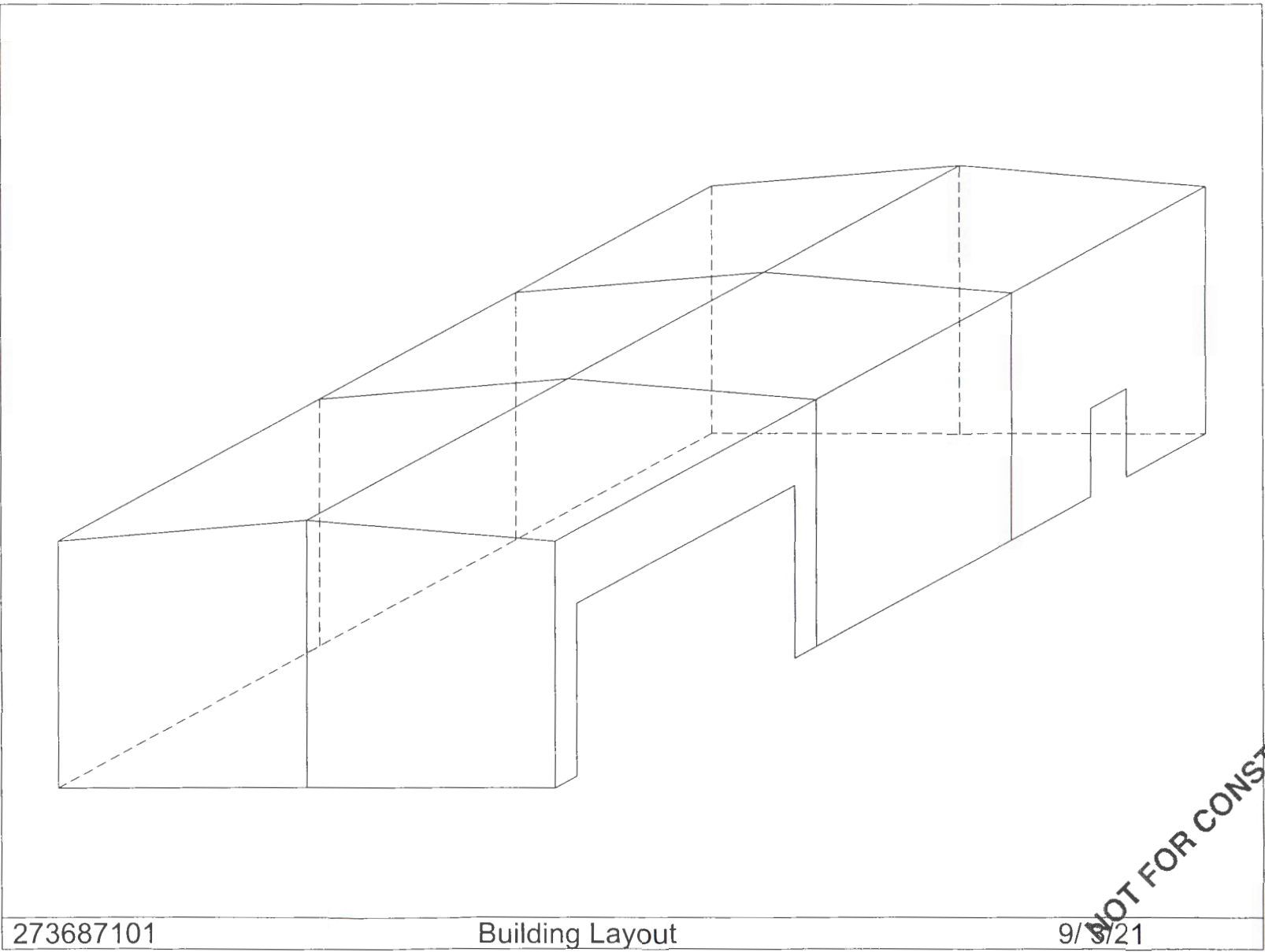
STIFFENER TABLE				
Mark	Stiff Mark	Width	Plate Size Thick	Length
RF-1-1	St-1	2 1/2	1/4"	16"
RF-1-3	St-1	2 1/2	1/4"	16"

▽ FLANGE BRACES BOTH SIDES (UNLESS NOTED)
 FBxxx(A)(1) xx=length(in)
 A=12X2X1/4



FRAME CROSS SECTION: FRAME LINE 2 3

NOT FOR CONSTRUCTION



273687101

Building Layout

9/9/21

NOT FOR CONSTRUCTION