



## **Division of Building Regulation**

### Submission Requirement for Commercial Electrical System Plan Review

When applying for an electrical permit, three (3) copies of plans and specification of the proposed work shall be submitted for new buildings. For existing buildings two (2) copies of the plans and specifications of the proposed work shall be submitted.

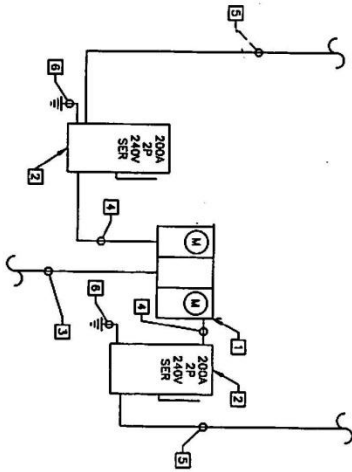
The plans shall be drawn to a scale with sufficient clarity and detail to show the extent and intension of the work being permitted. All submittals shall be accompanied by a completed Electrical Permit Application.

#### **Electrical Plans shall include:**

1. Building floor plan(s) showing lighting and power layout(s).  
(See Exhibit "A" & "B")
2. Location(s) of panel(s) and meter(s).
3. Provide a riser diagram and panel schedule(s), service voltage, current and phase, conductor and conduit sizes. (See Exhibit "B")
4. Provide circuit home runs and relate these to panel designation(s).  
(See Exhibit "A")
5. Provide lighting fixture schedule. (See Exhibit "B")
6. Location(s) of exit and emergency egress lighting and their respective circuits.
7. New buildings are required to comply with the energy conservation provisions of the Virginia Energy Code, submit documentation to support the electrical design compliance i.e. ASHRAE 90.1-2010, ComCheck  
([www.energycodes.gov/comcheck](http://www.energycodes.gov/comcheck))
8. New projects will require a Fault Current Certification from Dominion Virginia Power

Electrical plans and specification shall include the seal and signature of the design professional under whose supervision they were prepared **OR** if exempt under the provisions of Title 54.1-402 of the Virginia Code, the name, address and Master Tradesman card number of the Master Electrician under whose supervision the documents were prepared shall be affixed to each page of the plans.

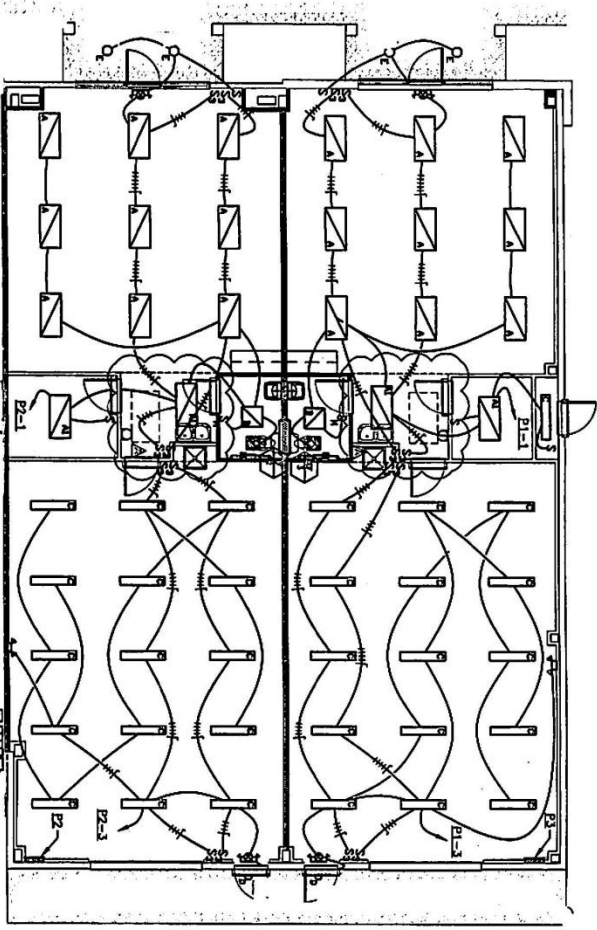




RISER DIAGRAM  
SCALE NONE

RISER DIAGRAM NOTES:

- 1 3 GANG, 240V, 1PH, 3W, NEMA 3R, METER BASE WITH (3) 200A METER SOCKETS.
- 2 200A-2P, 240V, NEMA 3R, SERVICE ENTRANCE RATED (SER) DISCONNECT SWITCH.
- 3 3" EMPTY CONDUIT DOWN 2'-0" B.F.G. AND OUT 5'-0" FROM EDGE OF BUILDING, VERIFY CONDUIT SIZE AND COORDINATE INSTALLATION WITH VA POWER.
- 4 2" CONDUIT WITH 3/4"Ø, 1/8" GND.
- 5 2" CONDUIT WITH 3/4"Ø, 1/8" GND, EXTEND TO PANEL IN TENANT SPACE.
- 6 1/4" GND. TO BUILDING STEEL, 1/4" GND. TO FIRST 5'-0" OF METALLIC INCOMING COLD WATER PIPING, 1/4" GND. TO FOOTING REBAR (SEE FOOTER GROUNDING DETAIL SHEET E-1), 1/8" GND. TO GROUNDING ROD.



LIGHTING PLAN

SEE RISER DIAGRAM  
MINIMUM NEC. CLEARANCES.

LIGHTING FIXTURE SCHEDULE

NO.	DESCRIPTION	LOCATION	MANUFACTURER	MODEL NUMBER	WATT	VOLTS	PHASE	REMARKS
1	FLUORESCENT LIGHT	HALL	OSRAM	40W/2000K	40	120	1PH	SEE RISER DIAGRAM
2	FLUORESCENT LIGHT	OFFICE	OSRAM	40W/2000K	40	120	1PH	SEE RISER DIAGRAM
3	FLUORESCENT LIGHT	OFFICE	OSRAM	40W/2000K	40	120	1PH	SEE RISER DIAGRAM
4	FLUORESCENT LIGHT	OFFICE	OSRAM	40W/2000K	40	120	1PH	SEE RISER DIAGRAM
5	FLUORESCENT LIGHT	OFFICE	OSRAM	40W/2000K	40	120	1PH	SEE RISER DIAGRAM
6	FLUORESCENT LIGHT	OFFICE	OSRAM	40W/2000K	40	120	1PH	SEE RISER DIAGRAM
7	FLUORESCENT LIGHT	OFFICE	OSRAM	40W/2000K	40	120	1PH	SEE RISER DIAGRAM
8	FLUORESCENT LIGHT	OFFICE	OSRAM	40W/2000K	40	120	1PH	SEE RISER DIAGRAM
9	FLUORESCENT LIGHT	OFFICE	OSRAM	40W/2000K	40	120	1PH	SEE RISER DIAGRAM
10	FLUORESCENT LIGHT	OFFICE	OSRAM	40W/2000K	40	120	1PH	SEE RISER DIAGRAM
11	FLUORESCENT LIGHT	OFFICE	OSRAM	40W/2000K	40	120	1PH	SEE RISER DIAGRAM
12	FLUORESCENT LIGHT	OFFICE	OSRAM	40W/2000K	40	120	1PH	SEE RISER DIAGRAM
13	FLUORESCENT LIGHT	OFFICE	OSRAM	40W/2000K	40	120	1PH	SEE RISER DIAGRAM
14	FLUORESCENT LIGHT	OFFICE	OSRAM	40W/2000K	40	120	1PH	SEE RISER DIAGRAM
15	FLUORESCENT LIGHT	OFFICE	OSRAM	40W/2000K	40	120	1PH	SEE RISER DIAGRAM
16	FLUORESCENT LIGHT	OFFICE	OSRAM	40W/2000K	40	120	1PH	SEE RISER DIAGRAM
17	FLUORESCENT LIGHT	OFFICE	OSRAM	40W/2000K	40	120	1PH	SEE RISER DIAGRAM
18	FLUORESCENT LIGHT	OFFICE	OSRAM	40W/2000K	40	120	1PH	SEE RISER DIAGRAM
19	FLUORESCENT LIGHT	OFFICE	OSRAM	40W/2000K	40	120	1PH	SEE RISER DIAGRAM
20	FLUORESCENT LIGHT	OFFICE	OSRAM	40W/2000K	40	120	1PH	SEE RISER DIAGRAM
21	FLUORESCENT LIGHT	OFFICE	OSRAM	40W/2000K	40	120	1PH	SEE RISER DIAGRAM
22	FLUORESCENT LIGHT	OFFICE	OSRAM	40W/2000K	40	120	1PH	SEE RISER DIAGRAM
23	FLUORESCENT LIGHT	OFFICE	OSRAM	40W/2000K	40	120	1PH	SEE RISER DIAGRAM
24	FLUORESCENT LIGHT	OFFICE	OSRAM	40W/2000K	40	120	1PH	SEE RISER DIAGRAM
25	FLUORESCENT LIGHT	OFFICE	OSRAM	40W/2000K	40	120	1PH	SEE RISER DIAGRAM
26	FLUORESCENT LIGHT	OFFICE	OSRAM	40W/2000K	40	120	1PH	SEE RISER DIAGRAM
27	FLUORESCENT LIGHT	OFFICE	OSRAM	40W/2000K	40	120	1PH	SEE RISER DIAGRAM
28	FLUORESCENT LIGHT	OFFICE	OSRAM	40W/2000K	40	120	1PH	SEE RISER DIAGRAM
29	FLUORESCENT LIGHT	OFFICE	OSRAM	40W/2000K	40	120	1PH	SEE RISER DIAGRAM
30	FLUORESCENT LIGHT	OFFICE	OSRAM	40W/2000K	40	120	1PH	SEE RISER DIAGRAM

1. ALL FIXTURES SHALL BE INSTALLED IN ACCORDANCE WITH THE MANUFACTURER'S INSTRUCTIONS AND THE NATIONAL ELECTRICAL CODE (NEC).  
2. ALL FIXTURES SHALL BE INSTALLED IN ACCORDANCE WITH THE MANUFACTURER'S INSTRUCTIONS AND THE NATIONAL ELECTRICAL CODE (NEC).  
3. ALL FIXTURES SHALL BE INSTALLED IN ACCORDANCE WITH THE MANUFACTURER'S INSTRUCTIONS AND THE NATIONAL ELECTRICAL CODE (NEC).