

UP-936-19; NATASHA House  
 Received 9-20-19  
 York County Planning Division

arci  
 architecture

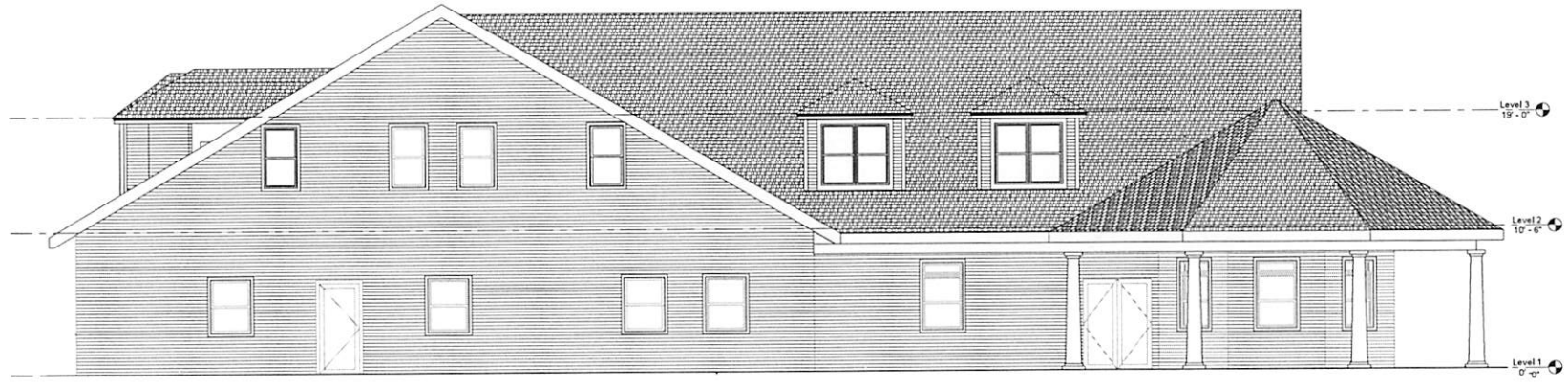
3630 geo. wash. rd. n. hwy.  
 suite 102  
 yorktown, va 23693  
 757.867.6530  
 info@arcich.com

building environments, communities + people

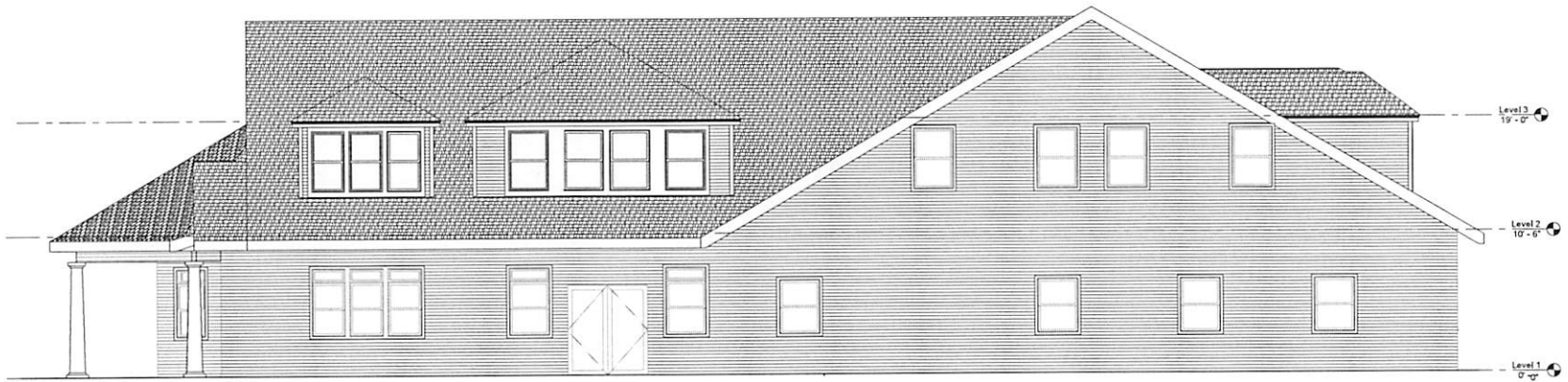


19020  
 8.29.2019

REVISION SCHEDULE



1 NORTH ELEVATION  
 1/4" = 1'-0"



2 SOUTH ELEVATION  
 1/4" = 1'-0"

York County, Virginia

NATASHA HOUSE

BUILDING  
 ELEVATIONS

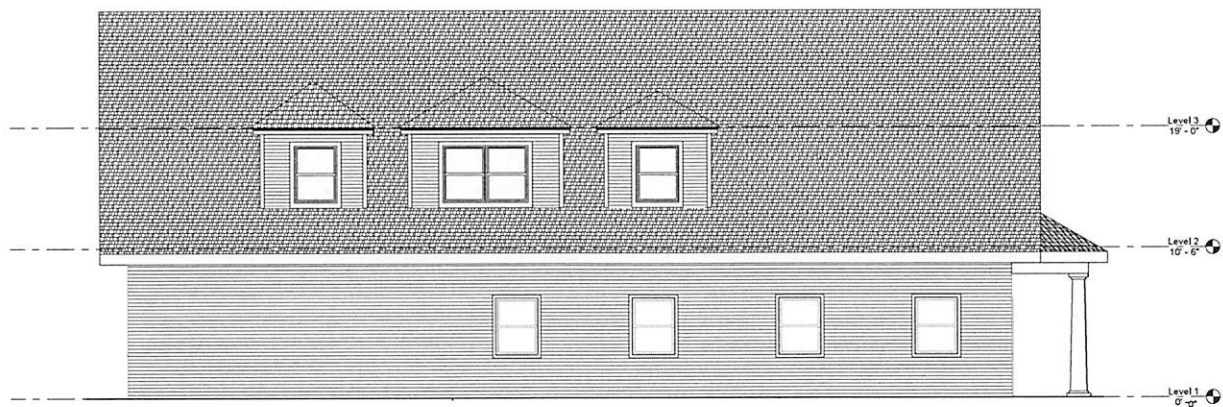
A103

NOT TO SCALE. THE SIZE AND POSITION OF ANY ELEMENTS OR FEATURES SHOWN IN THIS DRAWING ARE FOR INFORMATION ONLY AND DO NOT CONSTITUTE A CONTRACT. THE ARCHITECT ASSUMES NO LIABILITY FOR ANY ERRORS OR OMISSIONS. © 2019

UP-936-19; NATASHA House  
Received 9-20-19  
York County Planning Division



1 WEST ELEVATION  
1/4" = 1'-0"



2 EAST ELEVATION  
1/4" = 1'-0"

arci  
architecture

3650 geo. wash. mem. hwy.  
suite 102  
yorktown, va 23693  
757.867.6530  
info@arciaarch.com

building environments, communities + people



19020

8.29.2019

REVISION SCHEDULE

York County, Virginia

NATASHA HOUSE

BUILDING  
ELEVATIONS

A104