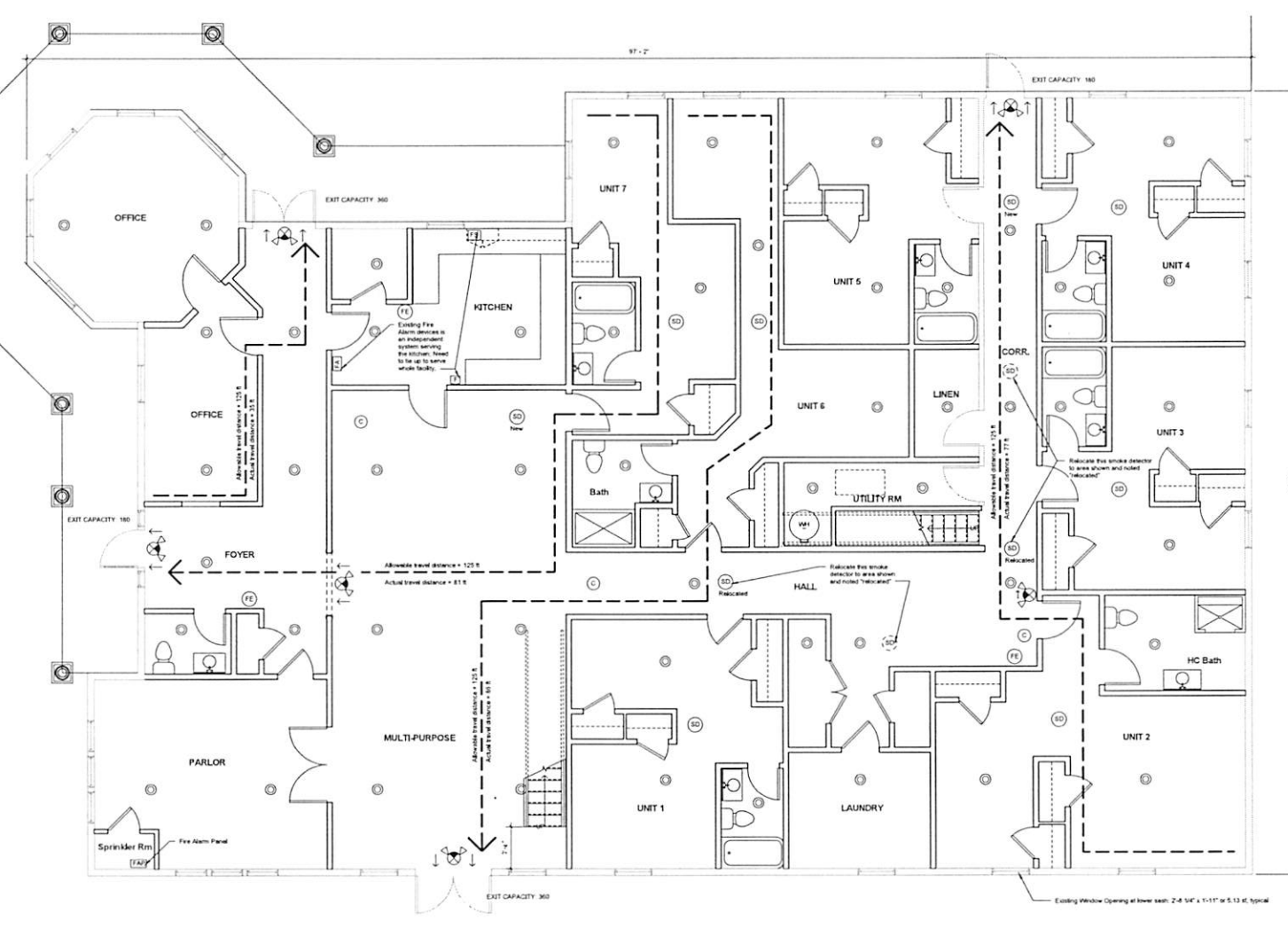


THE DOCUMENTS ARE THE PROPERTY OF ARCI, INC. ANY REPRODUCTION, COPIING, OR DISSEMINATION OF ANY PART OF THIS DOCUMENT IS STRICTLY PROHIBITED WITHOUT THE WRITTEN PERMISSION OF ARCI, INC.



1 FIRST FLOOR PLAN
1/4" = 1'-0"

BUILDING INFORMATION:

Building Code: VCC 2015, IBC-C 2012
 Use Group: Change of Occupancy from R14 to R2 (Congregate Living)
 Construction Type: V5 (Reinforced)
 Height and Area Limitations: (Table 504 & 506)
 Height Limitation: 2 Stories and 30 ft. (above AD)
 Area Limitation: 7500 sf (Aboveground)
 Actual Height and Area Provided:
 Actual Height: 2 Stories and 30 ft.
 Actual Building Area: 5242 sf
 Occupant Load: (Table 1004.1.2)
 Level One:
 Sleeping Units: 3260 sf at 200 sf/unit = 17 occupants
 Office/Art Area: 305 sf at 100 sf/unit = 4 occupants
 Level Two (Phase 2):
 Sleeping Units: Approx. 3000 sf at 200 sf/unit = 18 occupants

Building Occupancy: All Occupants
 Fire Protection System: Equipped with Automatic Sprinkler System (NFPA 13A)
 Fire Alarm & Smoke Alarm: shall be installed in accordance with Section 420.8 of the 2015 VCC. In conjunction with the alarm notification, the existing smoke pull station and alarm notification shall be tied into the building alarm system.
 Fire Resistance Rating: Existing wall for partitions separating units are a minimum of 1/2 hour rating in compliance with 706.3 exception 2).
 Existing walls are a minimum 5/8" non-rating per Section 722
 Fire-Retardant Coatings: 3/8" min rating consisting of 1/2" Type X Gypsum and 1/2" T.B.
 Exit Access Corridor: Fire Partition 1/2 Hour Horizontal Assembly Required at Corridor Units and 1/2 Hour at Exit Corridor.
 Means of Egress: Single exit required per IBC 1005.3.1.1.8. 4 provided with minimum 5 SF window opening and 42" tall height for each unit.
 Exit Access Travel Distance: (Table 1006.3.2) 120 ft (Allowable)
 Accessibility: An accessible route from accessible space on the level of accessible entrance has been provided complying with IBC 202.4.1. An HC accessible unit with accessible bathroom unit has been provided per IBC 1204.1.4
 Plumbing Fixture Requirements: VCC 2015, Table 2002.1. Each unit has been provided with 1 each of water closet, laundry and bathtub or shower. Facility is equipped with a laundry room with automatic clothes washers.

EXISTING FIRE RATING AT THE NATASHA HOUSE: (Per Section 722 of VCC 2015)

REQUIRED RATINGS AT INTERIOR PARTITIONS: 30 Mins.
Interior Partitions:
 1/2" Gypsum - 15 Mins.
 Wood Studs - 20 Mins.
 35 Mins. (ACTUAL RATING PROVIDED)
 REQUIRED RATINGS AT EXTERIOR WALLS: 30 Mins.
Exterior Walls:
 1/2" Gypsum - 15 Mins.
 Wood Studs - 20 Mins.
 Protection - 15 Mins.
 50 Mins. (ACTUAL RATING PROVIDED)
 REQUIRED RATINGS AT CEILING FRAMING: 30 Mins.
Ceiling Framing:
 1/2" Type X Gypsum - 25 Mins.
 Wood Joists - 10 Mins.
 35 Mins. (ACTUAL RATING PROVIDED)

LEGEND:

- (SD) Smoke Detector - Existing unless noted otherwise. None for additional device or removal for relocation for device shown dashed
- (FE) Sprinkler Head
- (FE) Fire Extinguisher
- (MPS) Manual Pull Station
- (FAA) Fire Alarm Annunciator
- (FS) Fire Suppression
- Exit Sign with Emergency Lights (Arrow shows direction of exit)
- (C) Ceiling Mounted Camera
- - - Travel Distance

UP-936-19; NATASHA House
 Received 9-20-19
 York County Planning Division



3530 geo. wisch. mem. hwy.
 suite D2
 yorktown, va 23093
 757.867.6530
 info@wclarck.com

building environments, communities + people

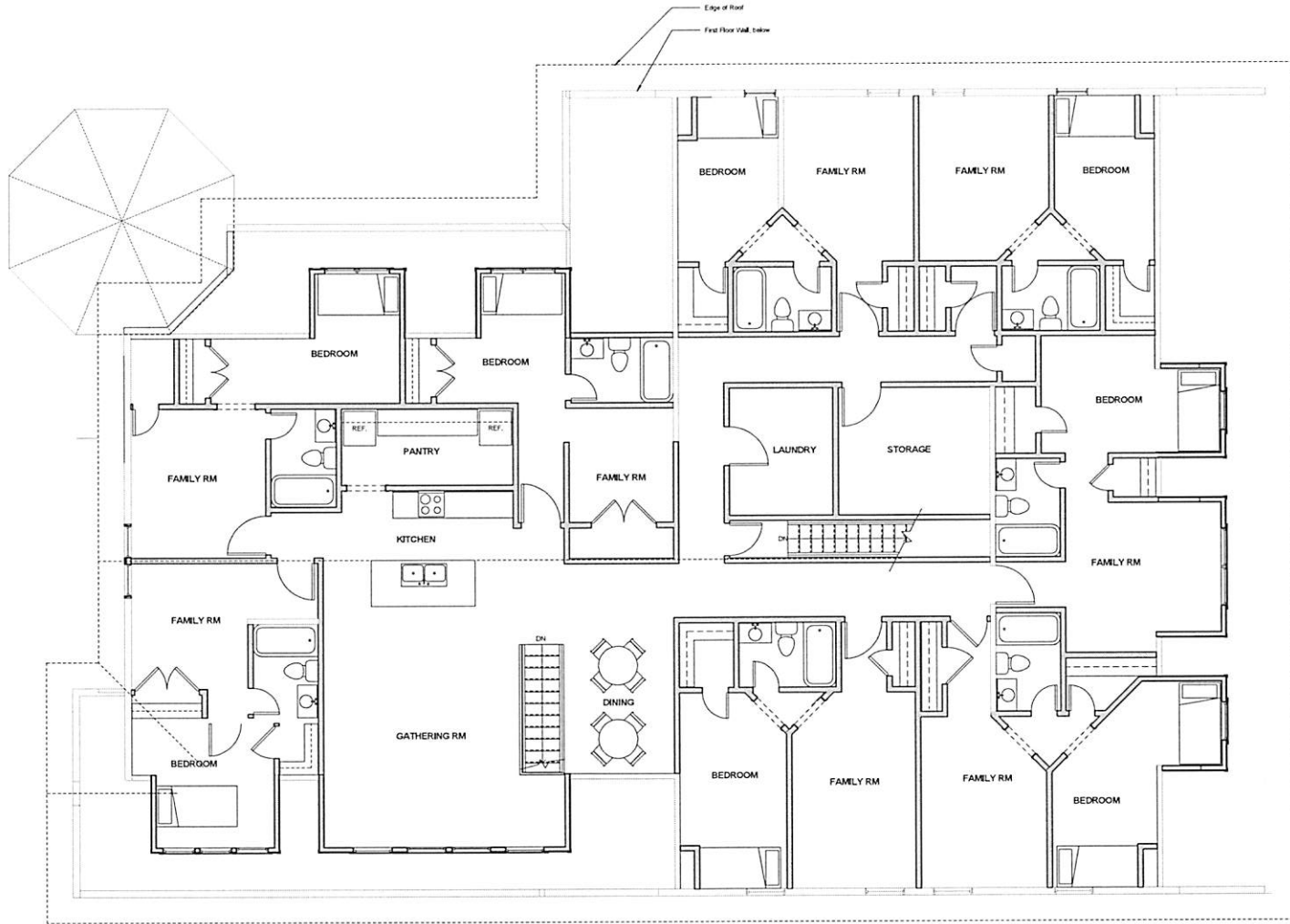


19020
 8.29.2019
 REVISION SCHEDULE

York County, Virginia
NATASHA HOUSE

FLOOR PLAN AND NOTES A101

THIS DOCUMENT IS THE PROPERTY OF ARCI, INC. ANY REPRODUCTION, COPIING, OR DISTRIBUTION OF THIS DOCUMENT IN ANY MANNER WITHOUT THE WRITTEN PERMISSION OF ARCI, INC. IS PROHIBITED. © 2019 ARCI, INC.



LEVEL 2 PLAN LAYOUT (Phase 2)
1/4" = 1'-0"

UP-936-19; NATASHA House
Received 9-20-19
York County Planning Division

arci
architecture

3630 pop. w/ash. mem. hwy.
suite b2
yorktown, va 23693
757.667.6530
info@arcich.com

building environments, communities + people



19020

8.29.2019

REVISION SCHEDULE

York County, Virginia

NATASHA HOUSE

LEVEL 2
(PHASE 2)

A102