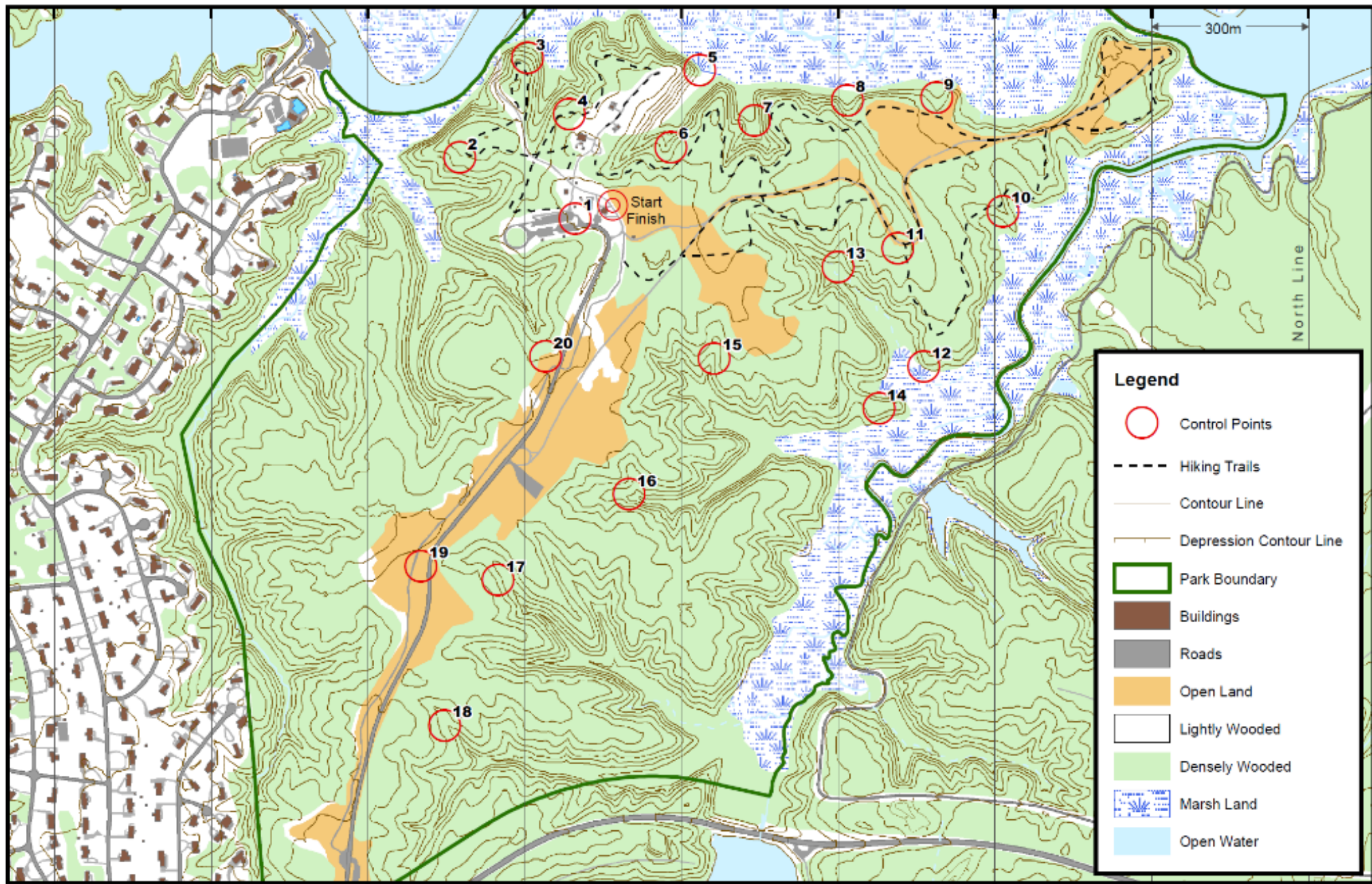
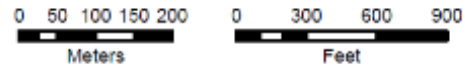


# New Quarter Park Orienteering Course



**Legend**

- Control Points
- Hiking Trails
- Contour Line
- Depression Contour Line
- Park Boundary
- Buildings
- Roads
- Open Land
- Lightly Wooded
- Densely Wooded
- Marsh Land
- Open Water



Map Scale = 1:10,000  
Contour Interval = 3.05 meters (10 feet)

Magnetic Declination is approximately 10 degrees West of True North in this area.



THIS IS NOT A LEGAL PLAT.  
This map should be used for information purposes. It is not suitable for detailed site planning.

# New Quarter Park Orienteering Course Clue Sheet

Progressively Beginner to Advanced Level of Difficulty		5.7 Kilometers Course
Control #	Control ID	Clue
1	30M	Man Made Object
2	31M	Depression
3	32M	Spur
4	33M	Root Stock
5	34M	Steep Bank
6	35M	Reentrant
7	36M	Reentrant
8	37M	Reentrant
9	38M	Thicket
10	39M	Spur
11	40M	Trail Junction
12	41M	Spur
13	42M	Reentrant
14	43M	Spur
15	44M	Reentrant
16	45M	Reentrant
17	46M	Reentrant
18	47M	Reentrant
19	48M	Single Tree
20	49M	Trail Junction