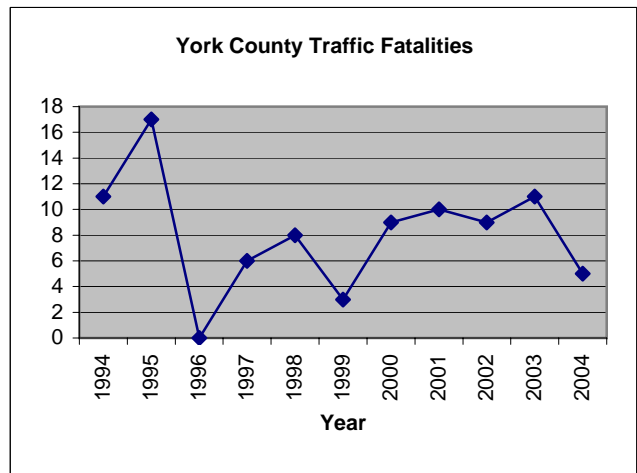
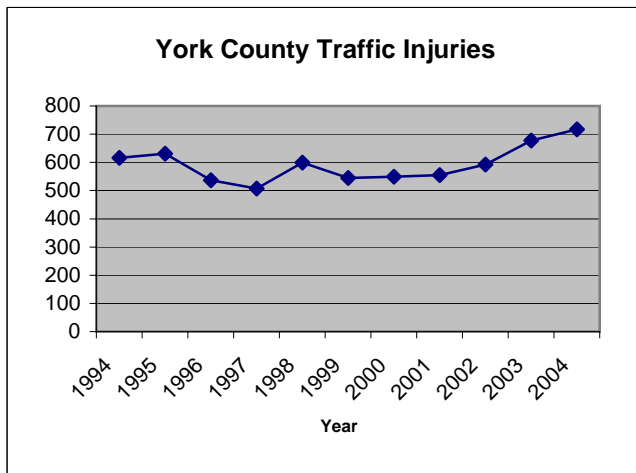
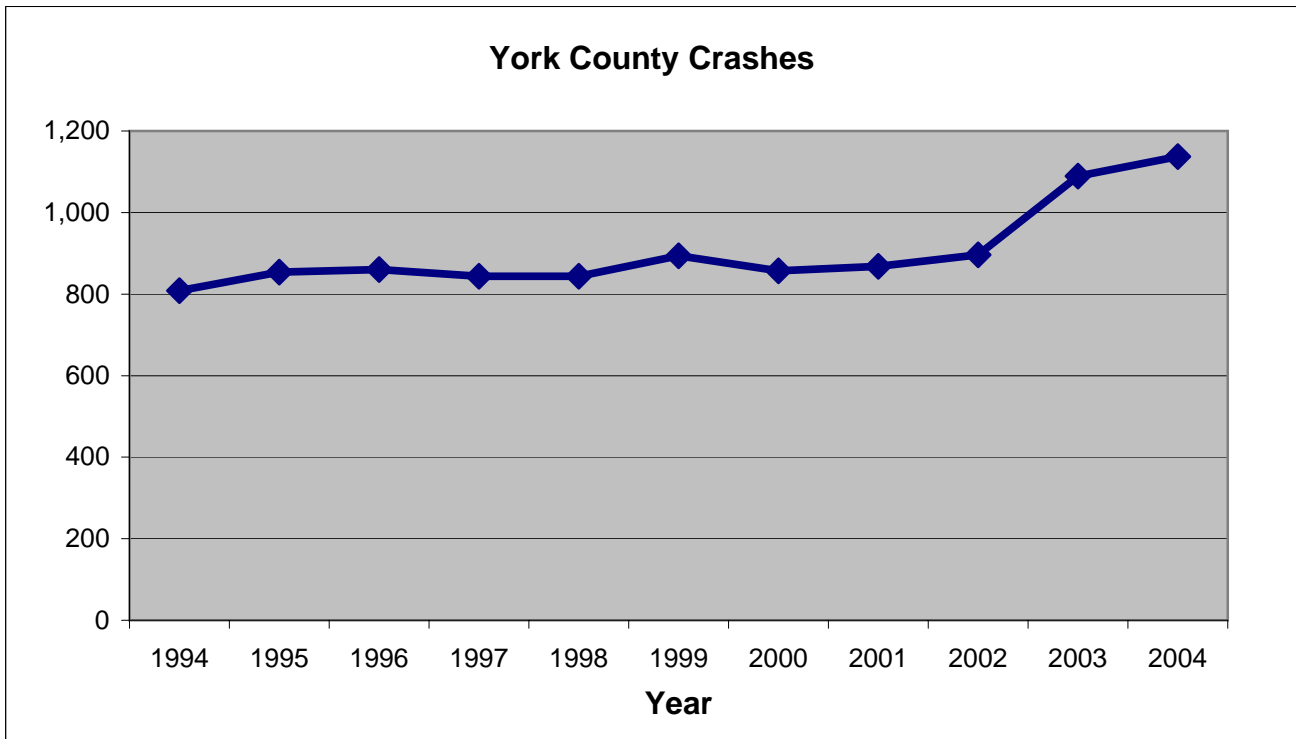


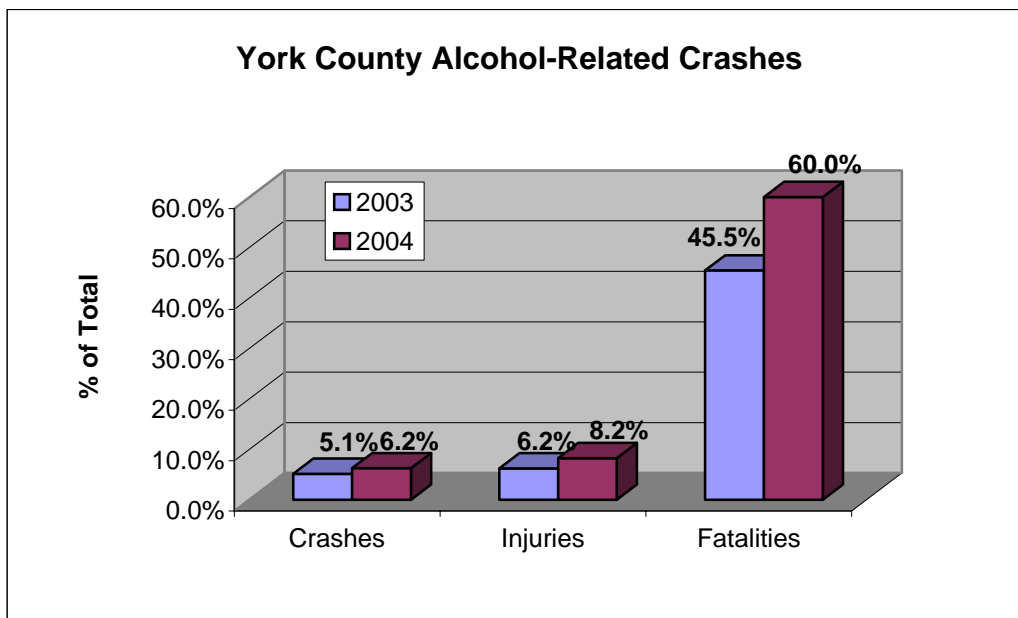
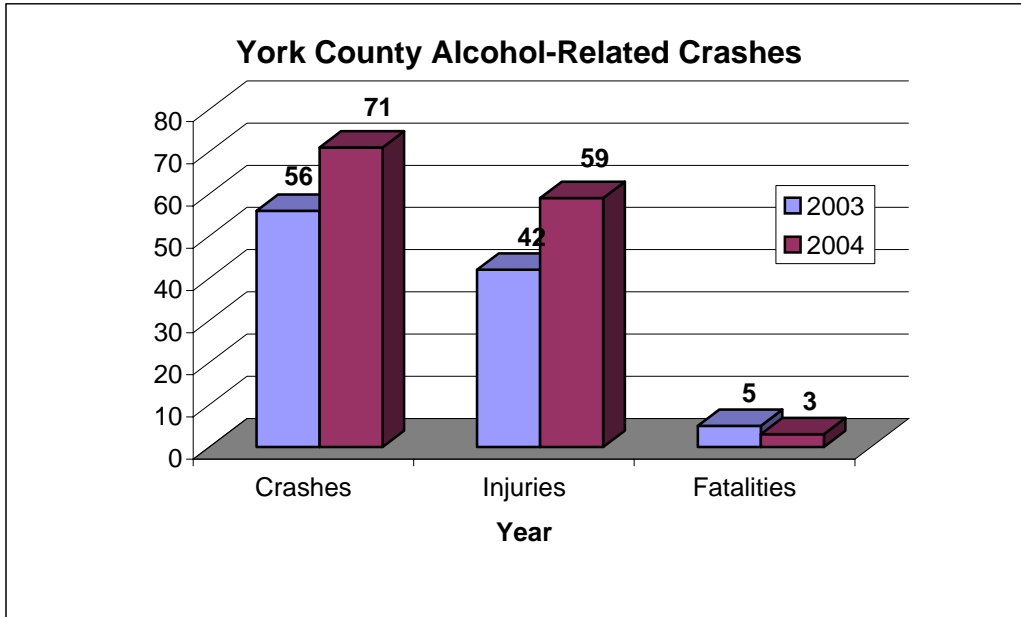
# York County Crash Facts 2004



<u>Year</u>	<u>Crashes</u>	<u>Injuries</u>	<u>Fatalities</u>
1994	808	616	11
1995	854	631	17
1996	860	537	0
1997	844	507	6
1998	844	599	8
1999	894	545	3
2000	857	549	9
2001	868	555	10
2002	896	592	9
2003	1,089	677	11
2004	1,137	717	5

Sources: Virginia Department of Motor Vehicles, Crash Facts (1992-1994 and 1999-2004) and York County Sheriff's Office (1995-1998)

# York County Crash Facts 2004



Alcohol-Related Crashes				
	2003		2004	
	Number	% of Total	Number	% of Total
Crashes	56	5.1%	71	6.2%
Injuries	42	6.2%	59	8.2%
Fatalities	5	45.5%	3	60.0%

Sources: Virginia Department of Motor Vehicles, Crash Facts (1992-1994 and 1999-2004) and York County Sheriff's Office (1995-1998)

# York County Crash Facts 2004

## Peninsula Regional Crash Data, 2002-2003

	James Hampton	City County	Newport News	Poquo- son	Williams- burg	York County	Peninsula Total
<b>2003</b>							
<b>Crashes</b>							
Number	4,115	656	3,900	81	204	<b>1,089</b>	10,045
Percent of Total	41.0%	6.5%	38.8%	0.8%	2.0%	<b>10.8%</b>	100.0%
<b>Injuries</b>							
Number	1,961	385	2,279	35	119	<b>677</b>	5,456
Percent of Total	35.9%	7.1%	41.8%	0.6%	2.2%	<b>12.4%</b>	100.0%
<b>Fatalities</b>							
Number	9	5	13	0	0	<b>11</b>	38
Percent of Total	23.7%	13.2%	34.2%	0.0%	0.0%	<b>28.9%</b>	100.0%
<b>Licensed Drivers</b>							
Number	87,848	39,259	111,931	8,774	10,220	<b>41,658</b>	299,690
Percent of Total	29.3%	13.1%	37.3%	2.9%	3.4%	<b>13.9%</b>	100.0%
<b>2004</b>							
<b>Crashes</b>							
Number	3,862	650	4,211	86	186	<b>1,137</b>	10,132
Percent of Total	38.1%	6.4%	41.6%	0.8%	1.8%	<b>11.2%</b>	100.0%
<b>Injuries</b>							
Number	1,677	384	2,532	30	99	<b>717</b>	5,439
Percent of Total	30.8%	7.1%	46.6%	0.6%	1.8%	<b>13.2%</b>	100.0%
<b>Fatalities</b>							
Number	14	6	12	0	0	<b>5</b>	37
Percent of Total	37.8%	16.2%	32.4%	0.0%	0.0%	<b>13.5%</b>	100.0%
<b>Licensed Drivers</b>							
Number	88,052	40,840	112,613	8,852	10,522	<b>42,424</b>	303,303
Percent of Total	29.0%	13.5%	37.1%	2.9%	3.5%	<b>14.0%</b>	100.0%
<b>Change, 2003-2004</b>							
<b>Crashes</b>							
Number	-253	-6	311	5	-18	<b>48</b>	87
Percent	-6.1%	-0.9%	8.0%	6.2%	-8.8%	<b>4.4%</b>	0.9%
<b>Injuries</b>							
Number	-284	-1	253	-5	-20	<b>40</b>	-17
Percent	-14.5%	-0.3%	11.1%	-14.3%	-16.8%	<b>5.9%</b>	-0.3%
<b>Fatalities</b>							
Number	5	1	-1	0	0	<b>-6</b>	-1
Percent	55.6%	20.0%	-7.7%	NA	NA	<b>-54.5%</b>	-2.6%
<b>Licensed Drivers</b>							
Number	204	1,581	682	78	302	<b>766</b>	3,613
Percent	0.2%	4.0%	0.6%	0.9%	3.0%	<b>1.8%</b>	1.2%

Sources: Virginia Department of Motor Vehicles, Crash Facts (1992-1994 and 1999-2004) and York County Sheriff's Office (1995-1998)