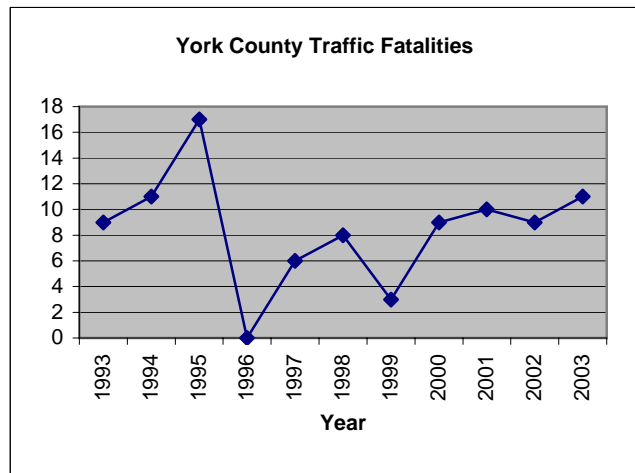
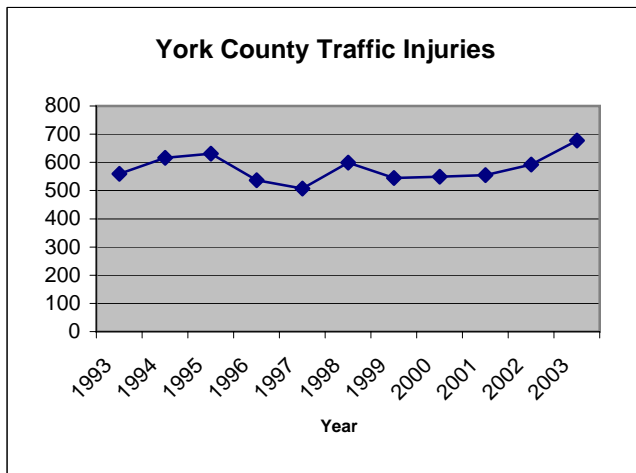
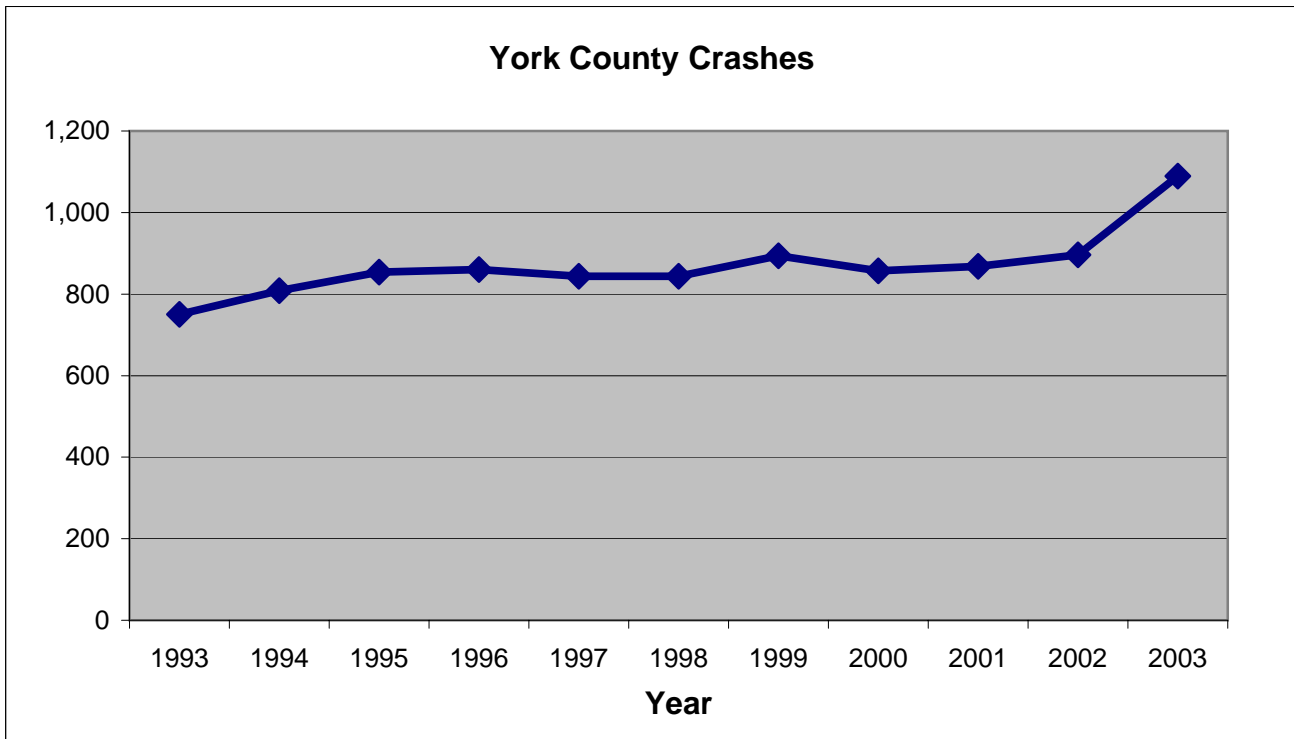


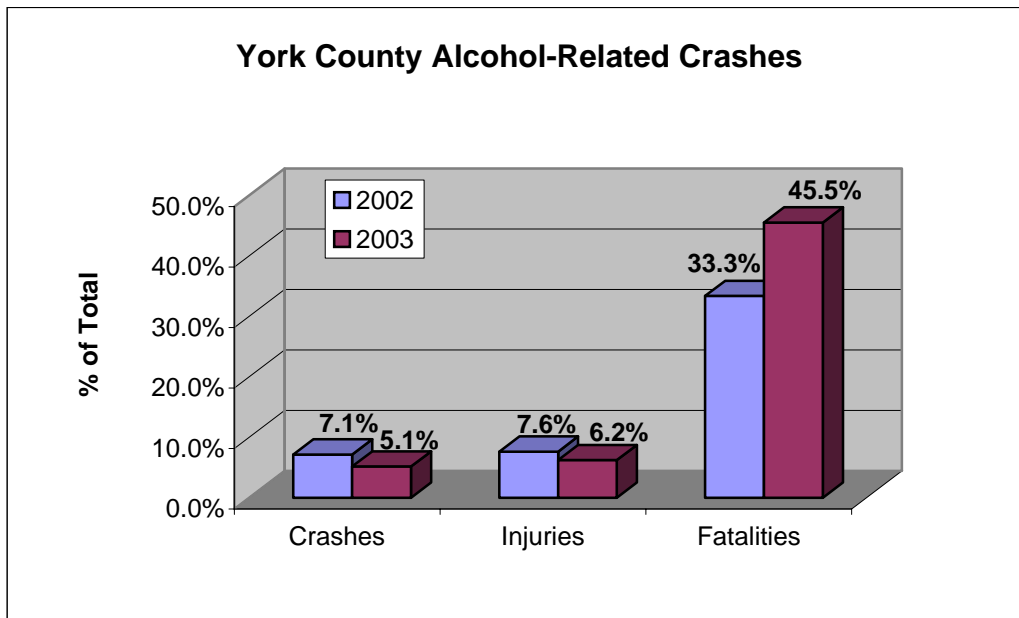
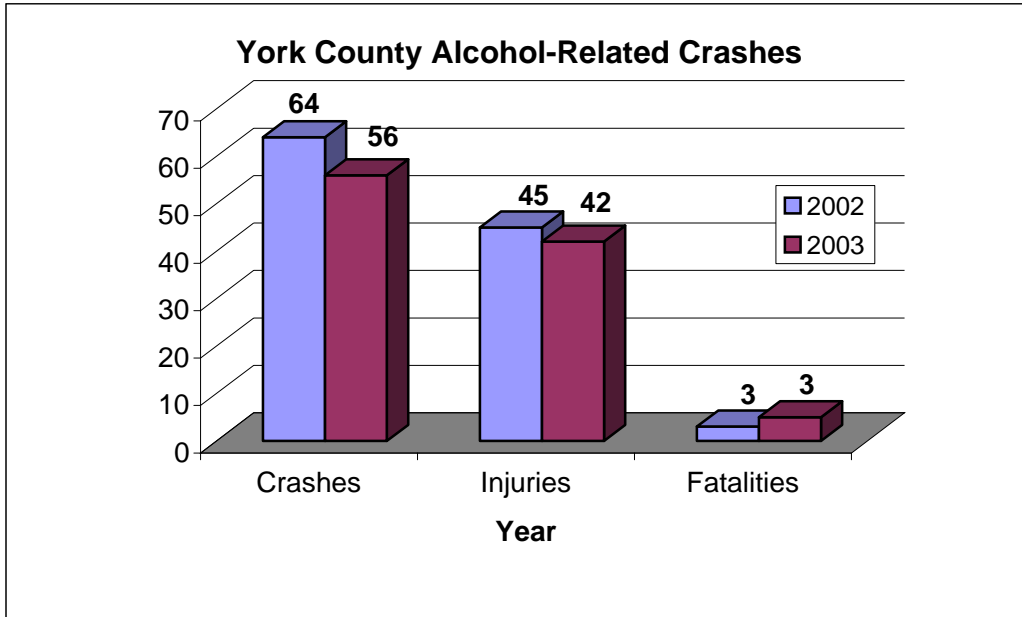
# York County Crash Facts 2003



<u>Year</u>	<u>Crashes</u>	<u>Injuries</u>	<u>Fatalities</u>
1993	750	559	9
1994	808	616	11
1995	854	631	17
1996	860	537	0
1997	844	507	6
1998	844	599	8
1999	894	545	3
2000	857	549	9
2001	868	555	10
2002	896	592	9
2003	1,089	677	11

Sources: Virginia Department of Motor Vehicles, Crash Facts (1993-1994 and 1999-2003) and York County Sheriff's Office (1995-1998)

# York County Crash Facts 2003



Alcohol-Related Crashes				
	2002		2003	
	Number	% of Total	Number	% of Total
Crashes	64	7.1%	56	5.1%
Injuries	45	7.6%	42	6.2%
Fatalities	3	33.3%	5	45.5%

Sources: Virginia Department of Motor Vehicles, Crash Facts (1993-1994 and 1999-2003) and York County Sheriff's Office (1995-1998)

# York County Crash Facts 2003

## Peninsula Regional Crash Data, 2002-2003

	Hampton	James City County	Newport News	Poquo- son	Williams- burg	York County	Peninsula Total
<b>2002</b>							
<b>Crashes</b>							
Number	3,663	558	3,861	91	222	<b>896</b>	9,291
Percent of Total	39.4%	6.0%	41.6%	1.0%	2.4%	<b>9.6%</b>	100.0%
<b>Injuries</b>							
Number	1,963	383	2,287	54	103	<b>592</b>	5,382
Percent of Total	36.5%	7.1%	42.5%	1.0%	1.9%	<b>11.0%</b>	100.0%
<b>Fatalities</b>							
Number	10	6	11	0	1	<b>9</b>	37
Percent of Total	27.0%	16.2%	29.7%	0.0%	2.7%	<b>24.3%</b>	100.0%
<b>Licensed Drivers</b>							
Number	87,609	37,692	111,635	8,590	9,804	<b>40,576</b>	295,906
Percent of Total	29.6%	12.7%	37.7%	2.9%	3.3%	<b>13.7%</b>	100.0%
<b>2003</b>							
<b>Crashes</b>							
Number	4,115	656	3,900	81	204	<b>1,089</b>	10,045
Percent of Total	41.0%	6.5%	38.8%	0.8%	2.0%	<b>10.8%</b>	100.0%
<b>Injuries</b>							
Number	1,961	385	2,279	35	119	<b>677</b>	5,456
Percent of Total	35.9%	7.1%	41.8%	0.6%	2.2%	<b>12.4%</b>	100.0%
<b>Fatalities</b>							
Number	9	5	13	0	0	<b>11</b>	38
Percent of Total	23.7%	13.2%	34.2%	0.0%	0.0%	<b>28.9%</b>	100.0%
<b>Licensed Drivers</b>							
Number	87,848	39,259	111,931	8,774	10,220	<b>41,658</b>	299,690
Percent of Total	29.3%	13.1%	37.3%	2.9%	3.4%	<b>13.9%</b>	100.0%
<b>Change, 2002-2003</b>							
<b>Crashes</b>							
Number	452	98	39	-10	-18	<b>193</b>	754
Percent	12.3%	17.6%	1.0%	-11.0%	-8.1%	<b>21.5%</b>	8.1%
<b>Injuries</b>							
Number	-2	2	-8	-19	16	<b>85</b>	74
Percent	-0.1%	0.5%	-0.3%	-35.2%	15.5%	<b>14.4%</b>	1.4%
<b>Fatalities</b>							
Number	-1	-1	2	0	-1	<b>2</b>	1
Percent	-10.0%	-16.7%	18.2%	NA	NA	<b>22.2%</b>	2.7%
<b>Licensed Drivers</b>							
Number	239	1,567	296	184	416	<b>1,082</b>	3,784
Percent	0.3%	4.2%	0.3%	2.1%	4.2%	<b>2.7%</b>	1.3%

Sources: Virginia Department of Motor Vehicles, Crash Facts (1993-1994 and 1999-2003) and York County Sheriff's Office (1995-1998)