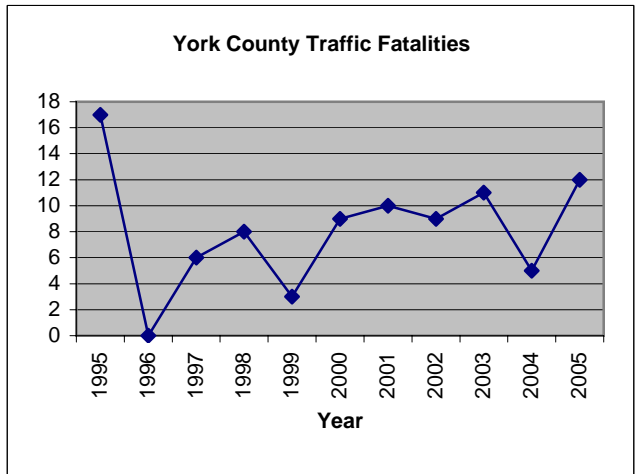
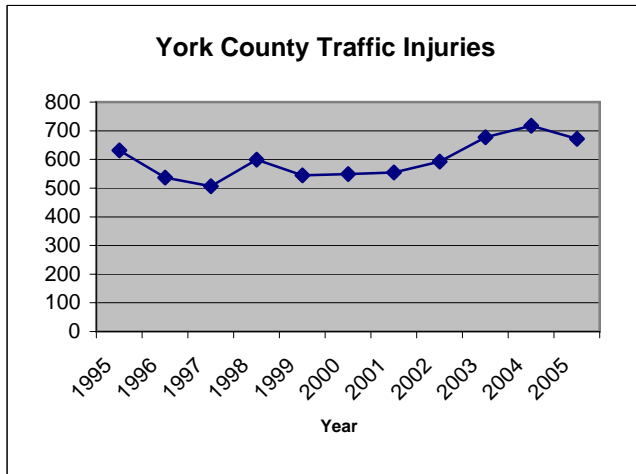
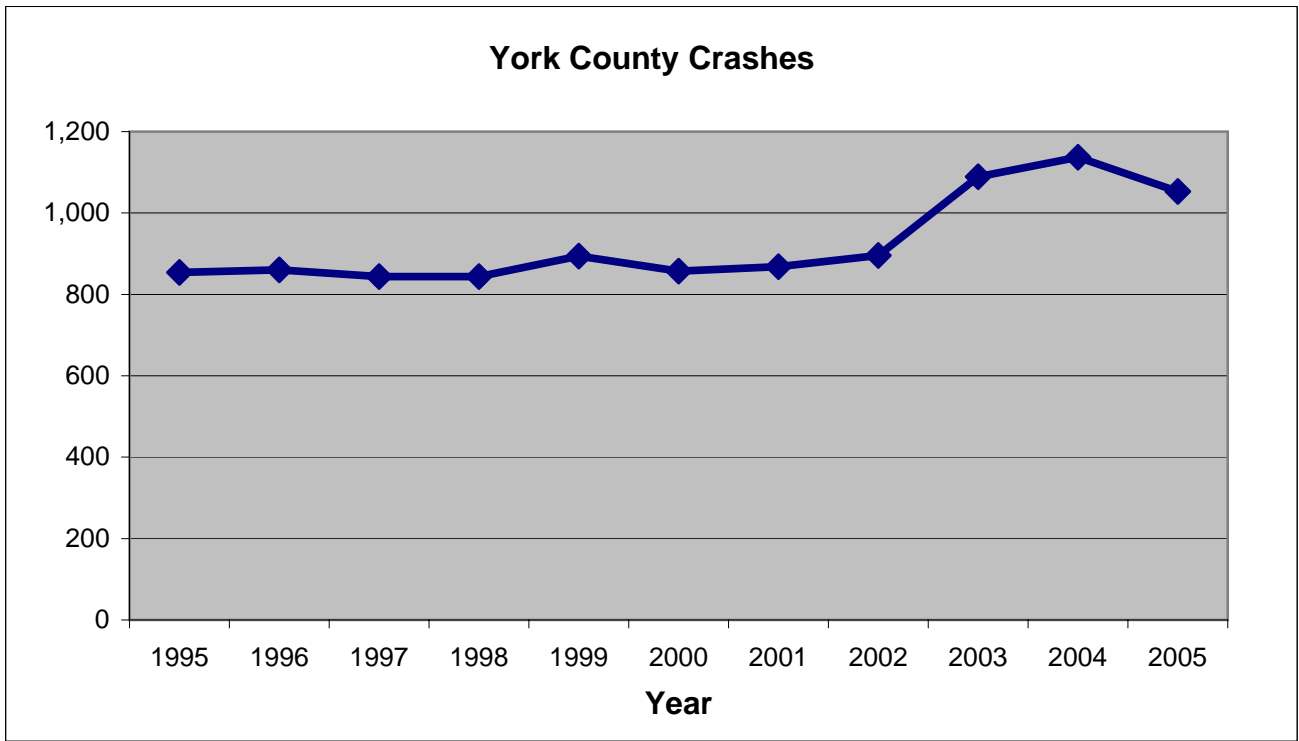


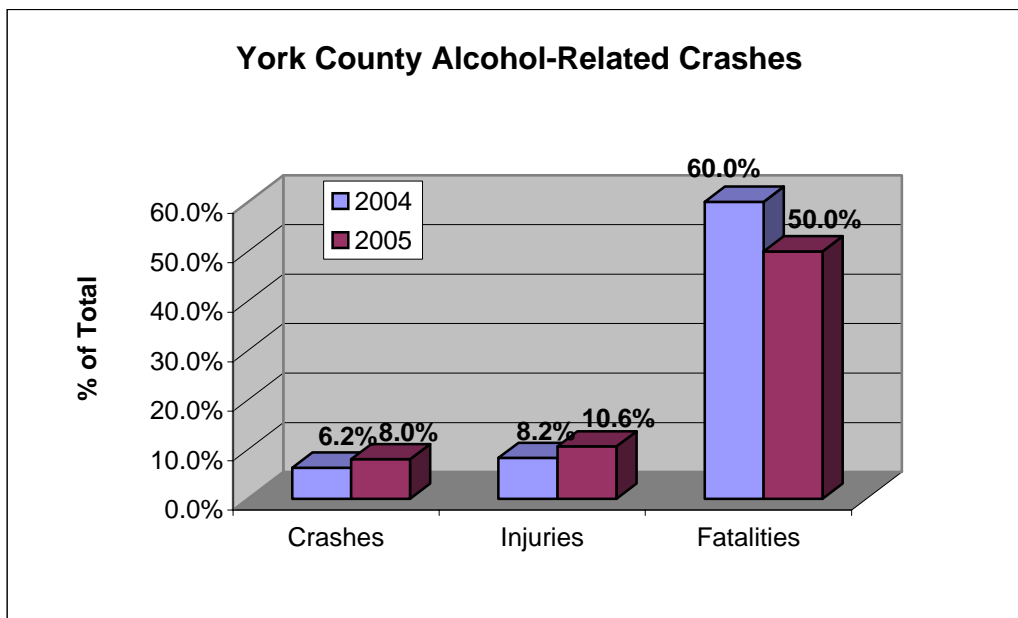
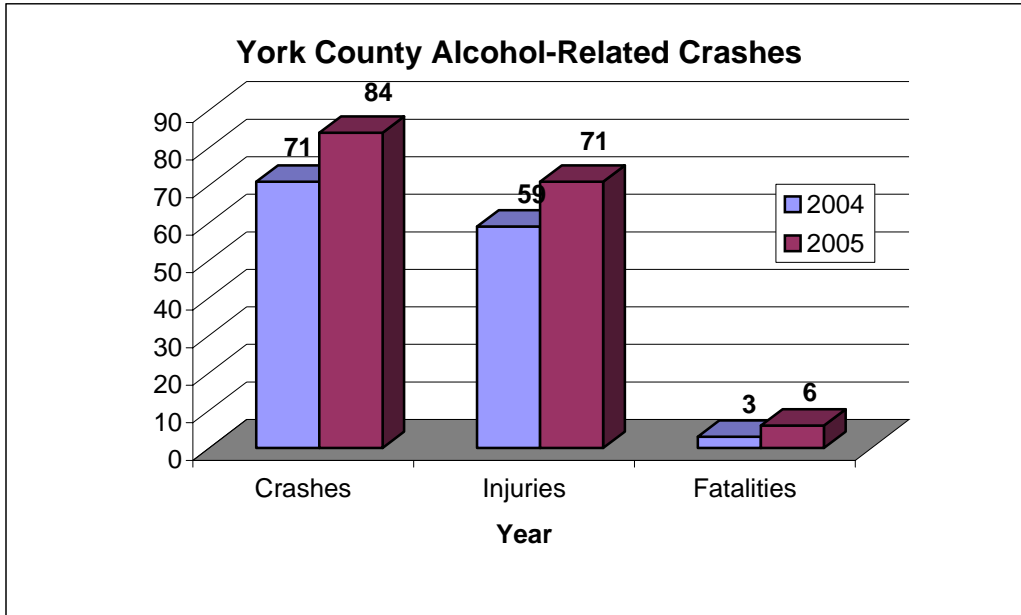
York County Crash Facts 2005



<u>Year</u>	<u>Crashes</u>	<u>Injuries</u>	<u>Fatalities</u>
1995	854	631	17
1996	860	537	0
1997	844	507	6
1998	844	599	8
1999	894	545	3
2000	857	549	9
2001	868	555	10
2002	896	592	9
2003	1,089	677	11
2004	1,137	717	5
2005	1,053	672	12

Sources: Virginia Department of Motor Vehicles, Crash Facts (1999-2005) and York County Sheriff's Office (1995-1998)

York County Crash Facts 2005



Alcohol-Related Crashes				
	2004		2005	
	Number	% of Total	Number	% of Total
Crashes	71	6.2%	84	8.0%
Injuries	59	8.2%	71	10.6%
Fatalities	3	60.0%	6	50.0%

York County Crash Facts 2005

Peninsula Regional Crash Data, 2004-2005

	Hampton	James City County	Newport News	Poquoson	Williamsburg	York County	Peninsula Total
2004							
Crashes							
Number	3,862	650	4,211	86	186	1,137	10,132
Percent of Total	38.1%	6.4%	41.6%	0.8%	1.8%	11.2%	100.0%
Injuries							
Number	1,677	384	2,532	30	99	717	5,439
Percent of Total	30.8%	7.1%	46.6%	0.6%	1.8%	13.2%	100.0%
Fatalities							
Number	14	6	12	0	0	5	37
Percent of Total	37.8%	16.2%	32.4%	0.0%	0.0%	13.5%	100.0%
Licensed Drivers							
Number	88,052	40,840	112,613	8,852	10,522	42,424	303,303
Percent of Total	29.0%	13.5%	37.1%	2.9%	3.5%	14.0%	100.0%
2005							
Crashes							
Number	3,875	703	4,160	83	186	1,053	10,060
Percent of Total	38.5%	7.0%	41.4%	0.8%	1.8%	10.5%	100.0%
Injuries							
Number	1,785	403	2,418	35	99	672	5,412
Percent of Total	33.0%	7.4%	44.7%	0.6%	1.8%	12.4%	100.0%
Fatalities							
Number	3	8	13	0	0	12	36
Percent of Total	8.3%	22.2%	36.1%	0.0%	0.0%	33.3%	100.0%
Licensed Drivers							
Number	88,725	40,840	113,062	8,852	10,749	43,293	305,521
Percent of Total	29.0%	13.4%	37.0%	2.9%	3.5%	14.2%	100.0%
Change, 2004-2005							
Crashes							
Number	13	53	-51	-3	0	-84	-72
Percent	0.3%	8.2%	-1.2%	-3.5%	0.0%	-7.4%	-0.7%
Injuries							
Number	108	19	-114	5	0	-45	-27
Percent	6.4%	4.9%	-4.5%	16.7%	0.0%	-6.3%	-0.5%
Fatalities							
Number	-11	2	1	0	0	7	-1
Percent	-78.6%	33.3%	8.3%	NA	NA	140.0%	-2.7%
Licensed Drivers							
Number	673	0	449	0	227	869	2,218
Percent	0.8%	0.0%	0.4%	0.0%	2.2%	2.0%	0.7%

Sources: Virginia Department of Motor Vehicles, Crash Facts (1999-2005) and York County Sheriff's Office (1995-1998)